



Property Type: Flat/Apartment

Bedrooms: 2

Summary: A welcoming two bedroom 2 bathroom period apartment with great natural light found on the ever popular Southfields Grid. Recently refurbished throughout.

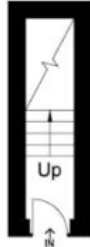
Description: A welcoming two bedroom 2 bathroom period apartment with great natural light found on the ever popular Southfields Grid. A rare conversion flat presented to an very good standard throughout with well proportioned accommodation laid out over two floors.

Date Available: 23 Jun 2026

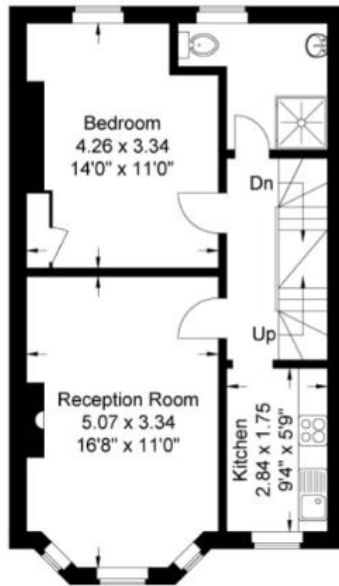
Rent (PCM): £2,350

Elsenham Street

Approximate Gross Internal Area 87.79 sq m / 944.96 sq ft



Ground Floor



First Floor



Second Floor

The floor plan is not to scale and measurements and areas shown are approximate and therefore should be used for illustrative purposes only. The plan has been prepared in accordance with theRICS code of measuring practice and whilst we have confidence in the information produced, it must not be relied on. If there is any aspect of particular importance, you should carry out or commission your inspection of the property. Copyright of Mason Photography Ltd

Score	Energy rating	Current	Potential
92+	A		
81-91	B		
69-80	C		72 C
55-68	D	67 D	
39-54	E		
21-38	F		
1-20	G		



Map supplied by Google Maps. To open map in your browser please [click here](#).