



Property Type: Detached

Bedrooms: 2

Summary: Cosy 2 bedroom Lodge nestled in the corner of John Innes Park. No white goods are included with the property. New boiler has just been installed. Early viewing highly recommended.

Description: Cosy 2 bedroom Lodge nestled in the corner of John Innes Park. No white goods are included with the property. New boiler has just been installed. Early viewing highly recommended. Located in the John Innes conservation area on the corner of Mostyn road and Watery Lane. More photos to follow.

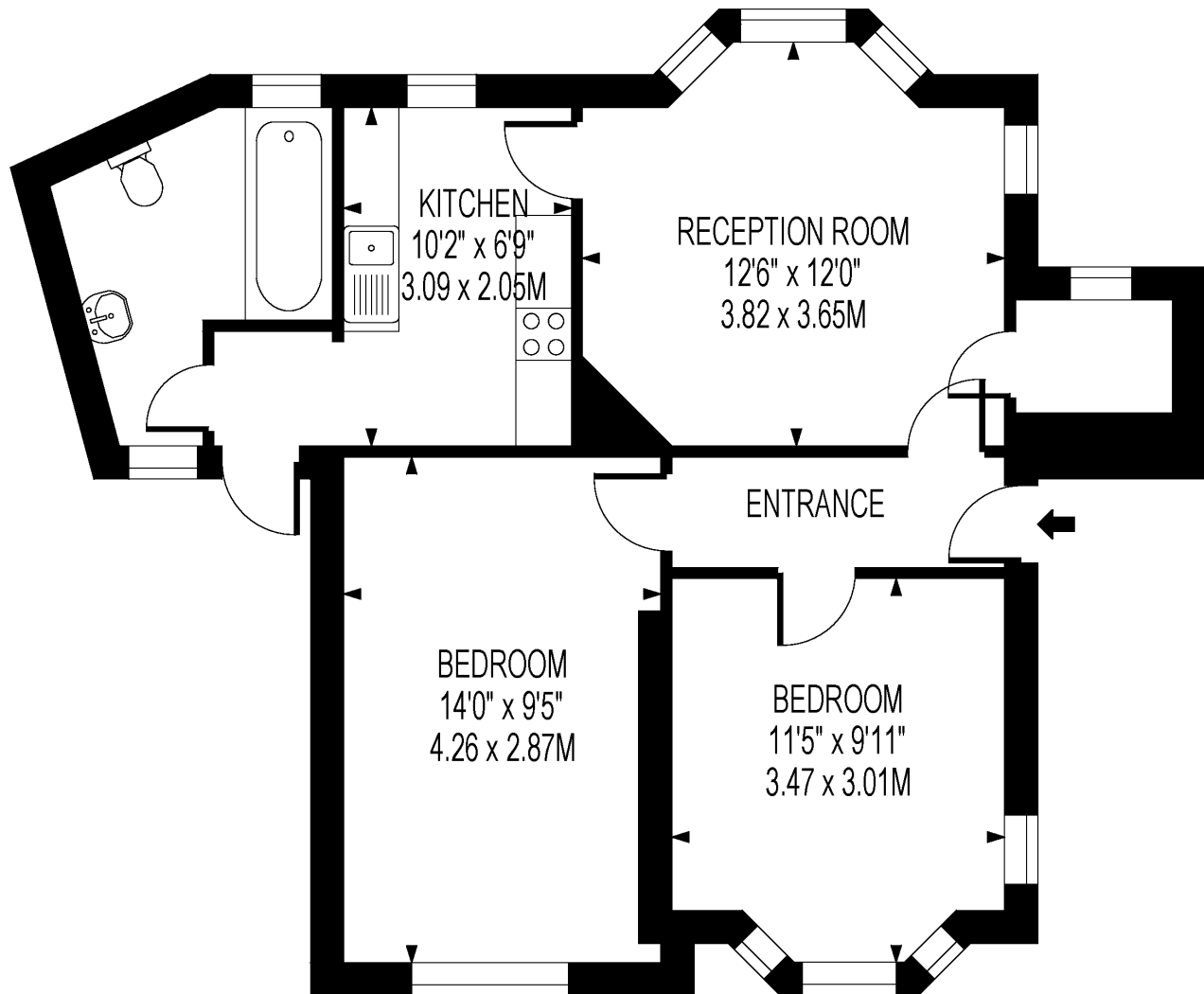
Date Available: 01 Mar 2026

Rent (PCM): £2,200

55a High St Wimbledon SW19 5BA tel: 020 8946 7661 info@mosslondonlettings.co.uk

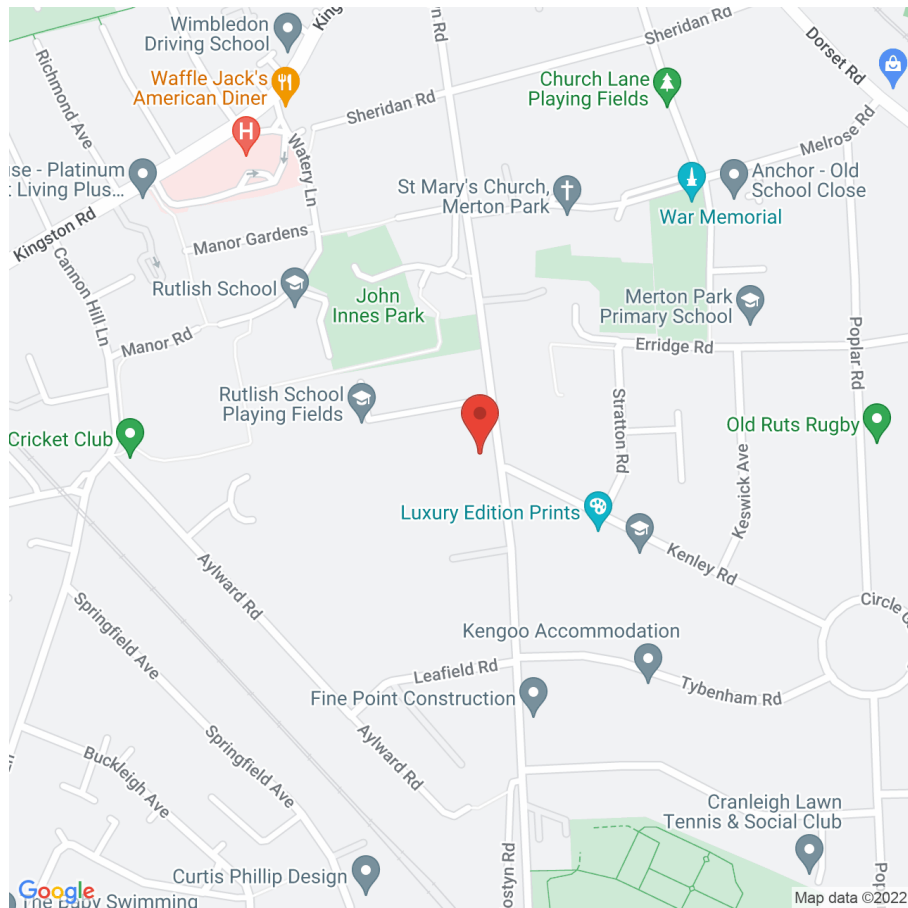
MOSTYN ROAD

APPROXIMATE GROSS INTERNAL FLOOR AREA : 595 SQ FT- 55.30 SQ M



FOR ILLUSTRATION PURPOSES ONLY

THIS FLOOR PLAN SHOULD BE USED AS A GENERAL OUTLINE FOR GUIDANCE ONLY AND DOES NOT CONSTITUTE IN WHOLE OR IN PART AN OFFER OR CONTRACT.
ANY INTENDING PURCHASER OR LESSEE SHOULD SATISFY THEMSELVES BY INSPECTION, SEARCHES, ENQUIRIES AND FULL SURVEY AS TO THE CORRECTNESS OF EACH STATEMENT.
ANY AREAS, MEASUREMENTS OR DISTANCES QUOTED ARE APPROXIMATE AND SHOULD NOT BE USED TO VALUE A PROPERTY OR BE THE BASIS OF ANY SALE OR LET.



Map supplied by Google Maps. To open map in your browser please [click here](#).