



Property Type: Flat/Apartment

Bedrooms: 2

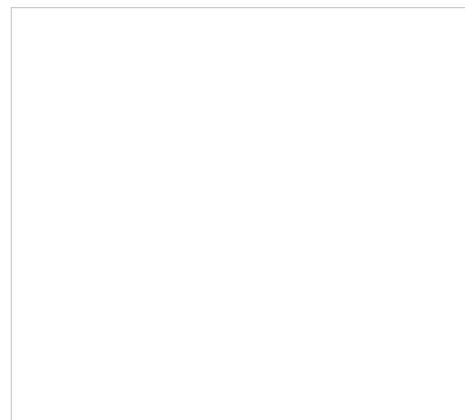
Summary: Merton Rd, Well presented and spacious two double bedroom garden flat within easy walk of Mainline/tube.

Description: Merton Rd, Wel presented and spacious two double bedroom garden flat within easy walk of Mainline/tube. Situated on the ground floor of this Victorian conversion. Bath/wc/shower. Kitchen with all appliances. Carpets/laminate floors. High ceilings; neutral decor. Furnished.

Date Available: 13 Jul 2025

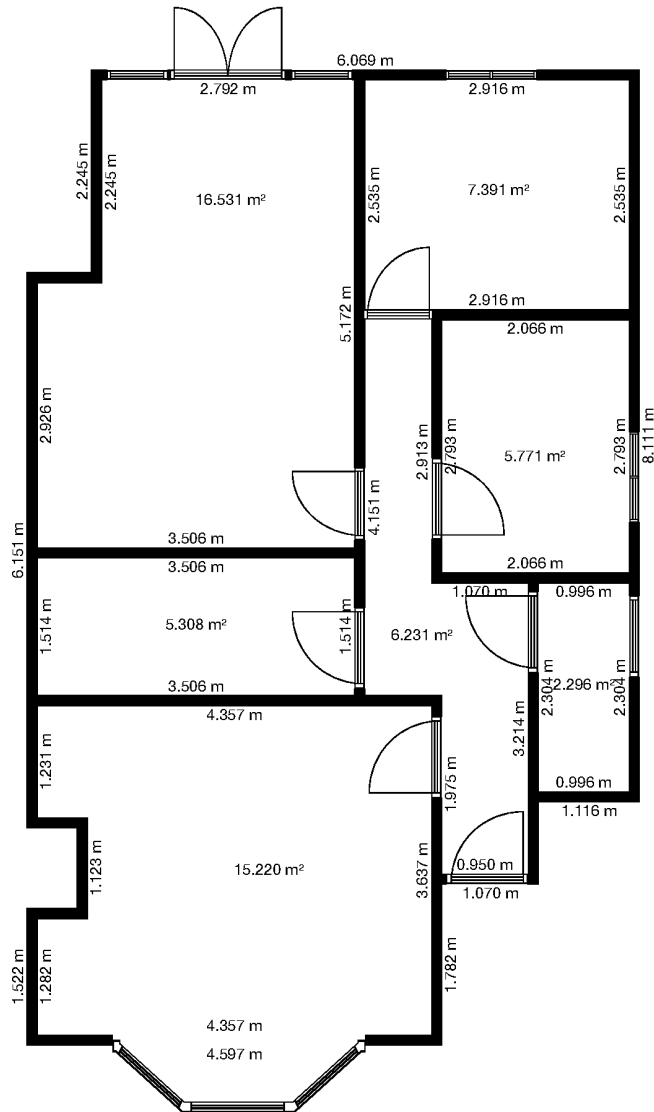
Rent (PCM): £1,900

55a High St Wimbledon SW19 5BA tel: 020 8946 7661 info@moss londonlettings.co.uk



190a Merton Road, SW19 1EG

26 Apr 2013 11:19:24



Floor 1

Score	Energy rating	Current	Potential
92+	A		
81-91	B		
69-80	C		77 C
55-68	D	67 D	
39-54	E		
21-38	F		
1-20	G		



Map supplied by Google Maps. To open map in your browser please [click here](#).