



**Property Type:** Flat/Apartment

**Bedrooms:** 3

**Summary:** 3 bedroom first floor flat in popular development refurbished throughout to a high standard, wood flooring, 2 double bedrooms and 1 single room/office. New kitchen and bathroom.

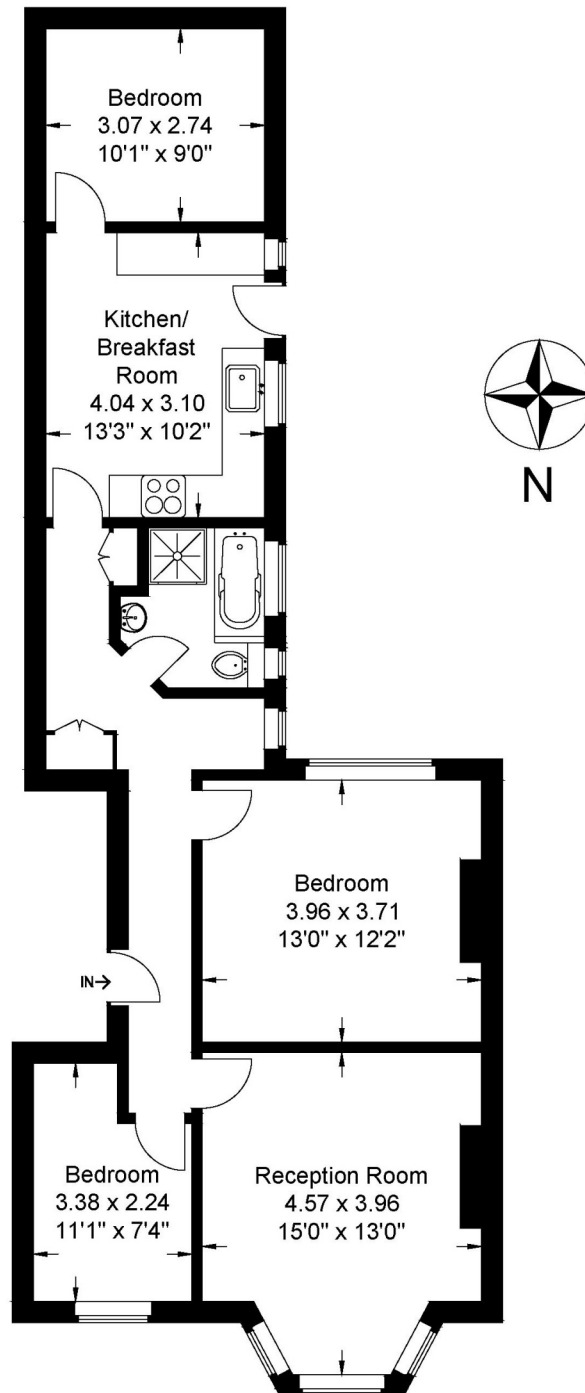
**Description:** 3 bedroom first floor flat in popular development refurbished throughout to a high standard, wood flooring, 2 double bedrooms and 1 single room/office. New kitchen and bathroom. Block benefits entryphone system and communal gardens.

**Date Available:** 23 Jul 2026

**Rent (PCM):** £2,300

# Pepys Court

Approximate Gross Internal Area 76.43 sq m / 822.68 sq ft



First Floor

The floor plan is not to scale and measurements and areas shown are approximate and therefore should be used for illustrative purposes only. The plan has been prepared in accordance with the RICS code of measuring practice and whilst we have confidence in the information produced, it must not be relied on. If there is any aspect of particular importance, you should carry out or commission your inspection of the property.  
Copyright of Maison Photography Ltd



Map supplied by Google Maps. To open map in your browser please [click here](#).