



Property Type: Detached

Bedrooms: 2

Summary: Cosy 2 bedroom Lodge nestled in the corner of John Innes Park. Currently being redecorated and new flooring being installed. Available 18th November on a long let basis.

Description: Cosy 2 bedroom Lodge nestled in the corner of John Innes Park. Currently being redecorated and new flooring being installed. Available 18th November on a long let basis. No white goods are included with the property. New boiler has just been installed. Early viewing highly recommended.

Date Available: 01 Mar 2026

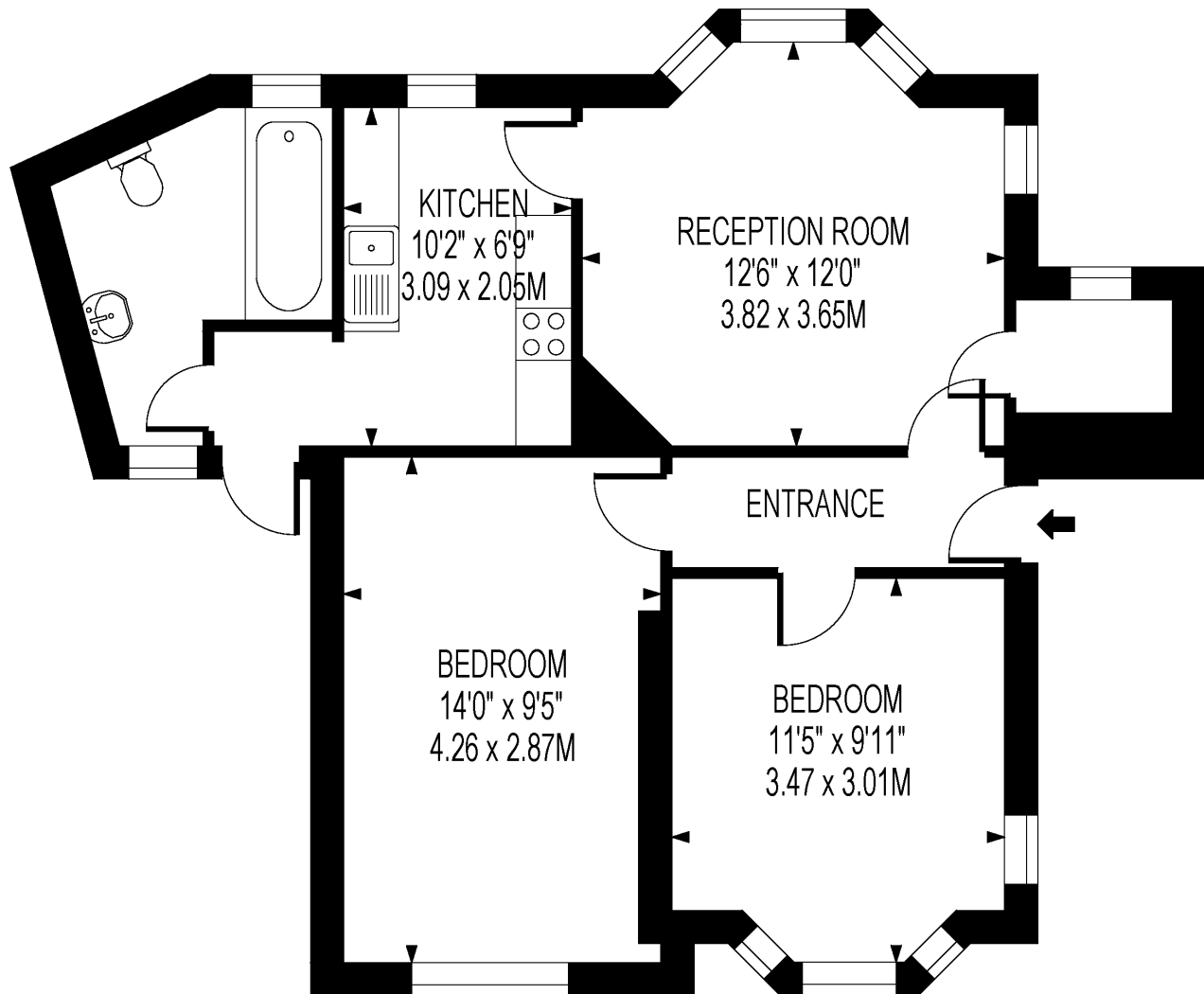
Rent (PCM): £1,850

55a High St Wimbledon SW19 5BA tel: 020 8946 7661 [info@mosslondonlettings.co.uk](mailto:info@mosslondonlettings.co.uk)

**LET BY**

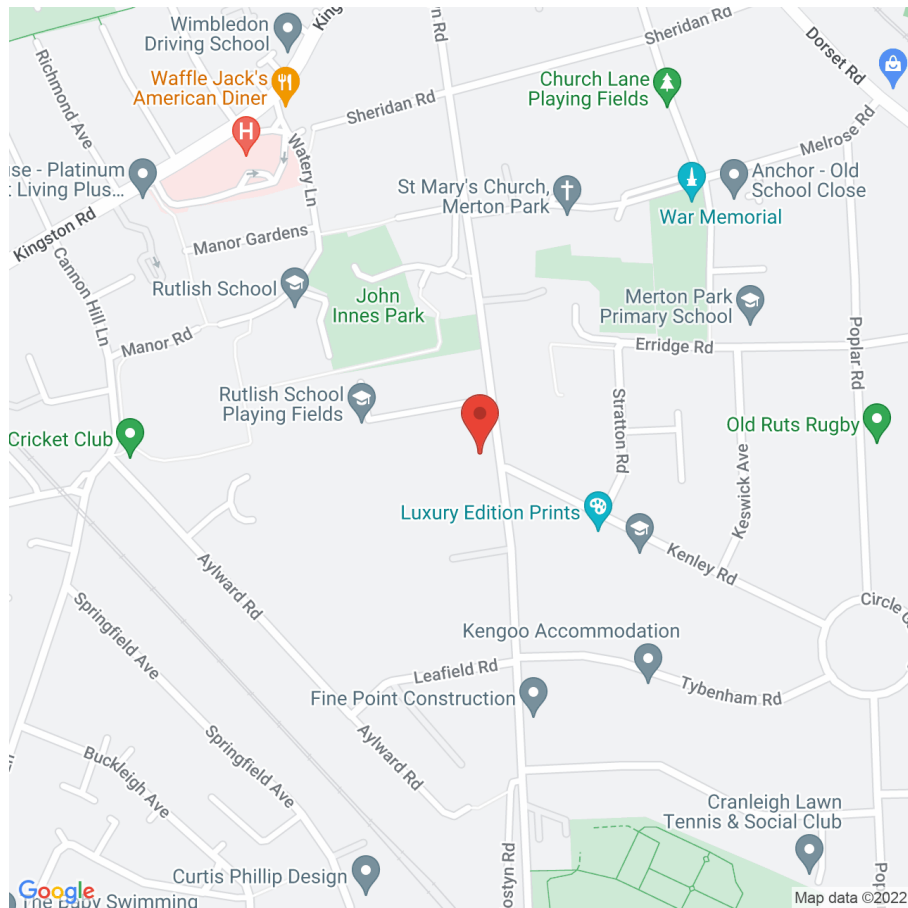
## MOSTYN ROAD

APPROXIMATE GROSS INTERNAL FLOOR AREA : 595 SQ FT- 55.30 SQ M



### FOR ILLUSTRATION PURPOSES ONLY

THIS FLOOR PLAN SHOULD BE USED AS A GENERAL OUTLINE FOR GUIDANCE ONLY AND DOES NOT CONSTITUTE IN WHOLE OR IN PART AN OFFER OR CONTRACT.  
ANY INTENDING PURCHASER OR LESSEE SHOULD SATISFY THEMSELVES BY INSPECTION, SEARCHES, ENQUIRIES AND FULL SURVEY AS TO THE CORRECTNESS OF EACH STATEMENT.  
ANY AREAS, MEASUREMENTS OR DISTANCES QUOTED ARE APPROXIMATE AND SHOULD NOT BE USED TO VALUE A PROPERTY OR BE THE BASIS OF ANY SALE OR LET.



Map supplied by Google Maps. To open map in your browser please [click here](#).