



Property Type: Flat/Apartment

Bedrooms: 3

Summary: A charming and spacious three-bedroom top-floor maisonette in SW20, offering bright interiors, period charm, and modern amenities.

Description: This delightful three-bedroom top-floor maisonette is set within a charming period property in the sought-after SW20 area. The home offers generous living space, featuring a bright and spacious reception room enhanced by bay windows that flood the room with natural light.

Date Available: 01 Jun 2026

Rent (PCM): £2,200

55a High St Wimbledon SW19 5BA tel: 020 8946 7661 info@moss londonlettings.co.uk

UNDER OFFER

Kingston Road

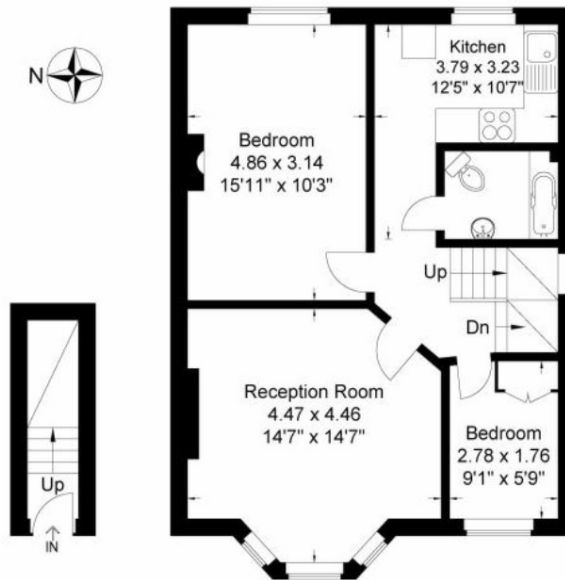
Approximate Gross Internal Area

86.30 sq m / 928.92 sq ft

(Excluding Shed)



Second Floor



Ground Floor

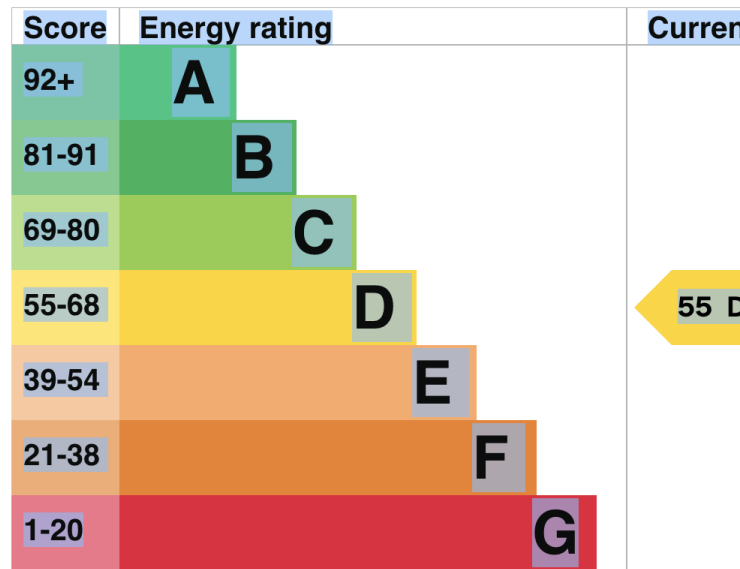
First Floor

Illustration for identification purposes only, measurements are approximate, not to Scale

Energy rating and score

This property's energy rating is D. It has the potential to be C

[See how to improve this property's energy efficiency.](#)

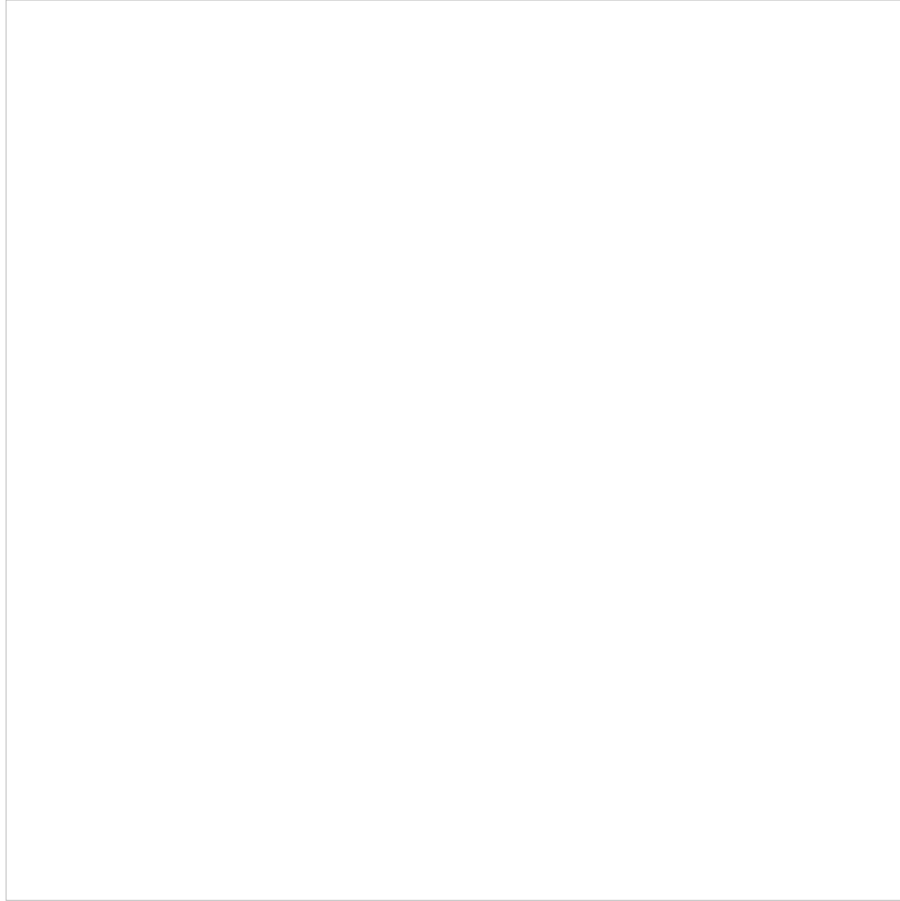


The graph shows this property's current and potential energy rating.

Properties get a rating from A (best) to G (worst) and a score. The higher the rating and score, the lower your energy bills are likely to be.

For properties in England and Wales:

- the average energy rating is D



Map supplied by Google Maps. To open map in your browser please [click here](#).