



Property Type: Flat/Apartment

Bedrooms: 1

Summary: Very spacious 1 bedroom apartment in popular block close to Raynes park station

Description: A large ground floor one double bedroom apartment with door to attractive communal grounds and within short walk of Raynes Park high street & station (fast service to Waterloo). Well kept communal areas.

Date Available: 15 Jul 2025

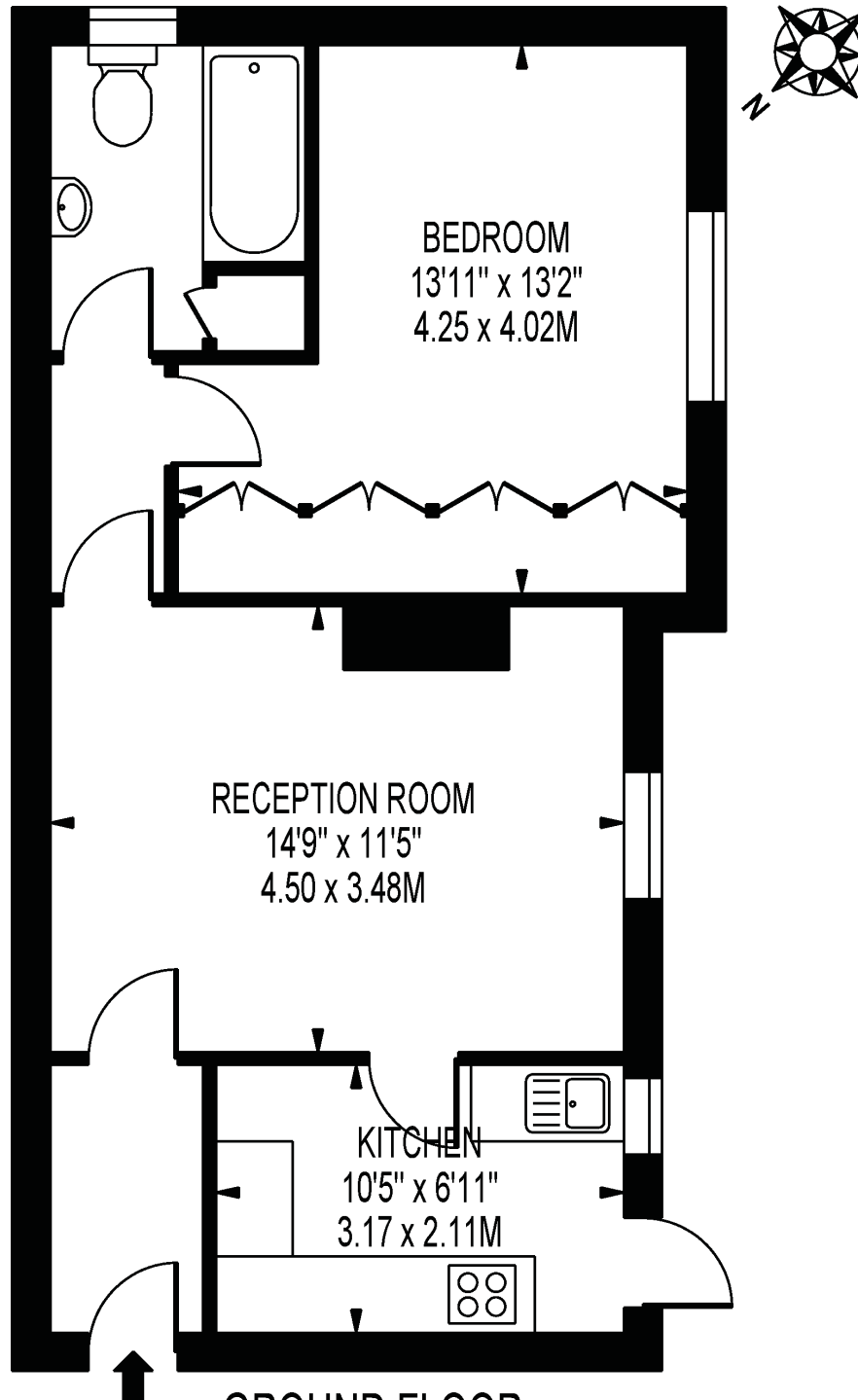
Rent (PCM): £1,450

55a High St Wimbledon SW19 5BA tel: 020 8946 7661 info@moss londonlettings.co.uk

UNDER OFFER

RICHMOND COURT

APPROXIMATE GROSS INTERNAL FLOOR AREA: 543 SQ FT - 50.45 SQ M



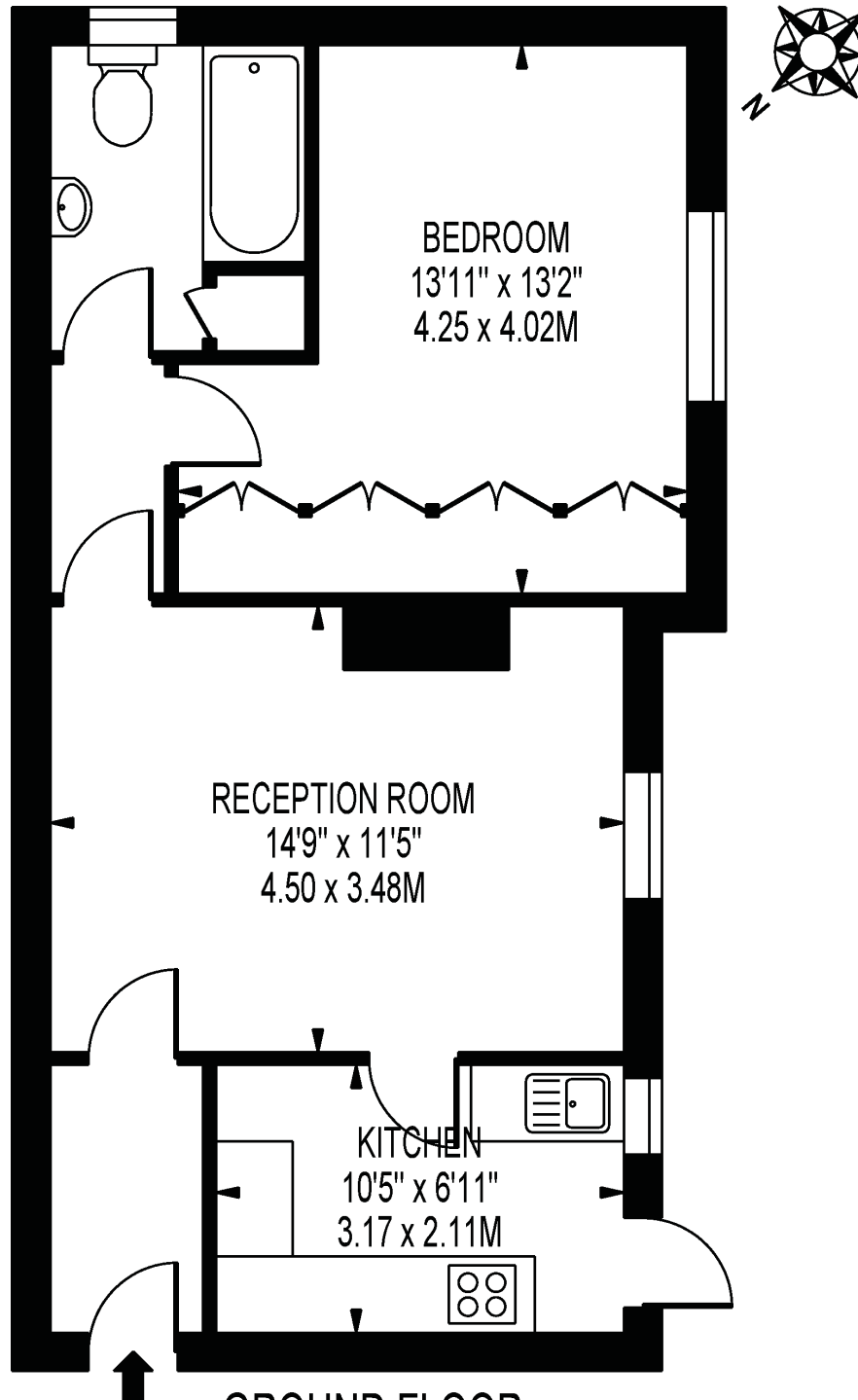
GROUND FLOOR

FOR ILLUSTRATION PURPOSES ONLY

THIS FLOOR PLAN SHOULD BE USED AS A GENERAL OUTLINE FOR GUIDANCE ONLY AND DOES NOT CONSTITUTE IN WHOLE OR IN PART AN OFFER OR CONTRACT.
ANY INTENDING PURCHASER OR LESSEE SHOULD SATISFY THEMSELVES BY INSPECTION, SEARCHES, ENQUIRIES AND FULL SURVEY AS TO THE CORRECTNESS OF EACH STATEMENT.
ANY AREAS, MEASUREMENTS OR DISTANCES QUOTED ARE APPROXIMATE AND SHOULD NOT BE USED TO VALUE A PROPERTY OR BE THE BASIS OF ANY SALE OR LET.

RICHMOND COURT

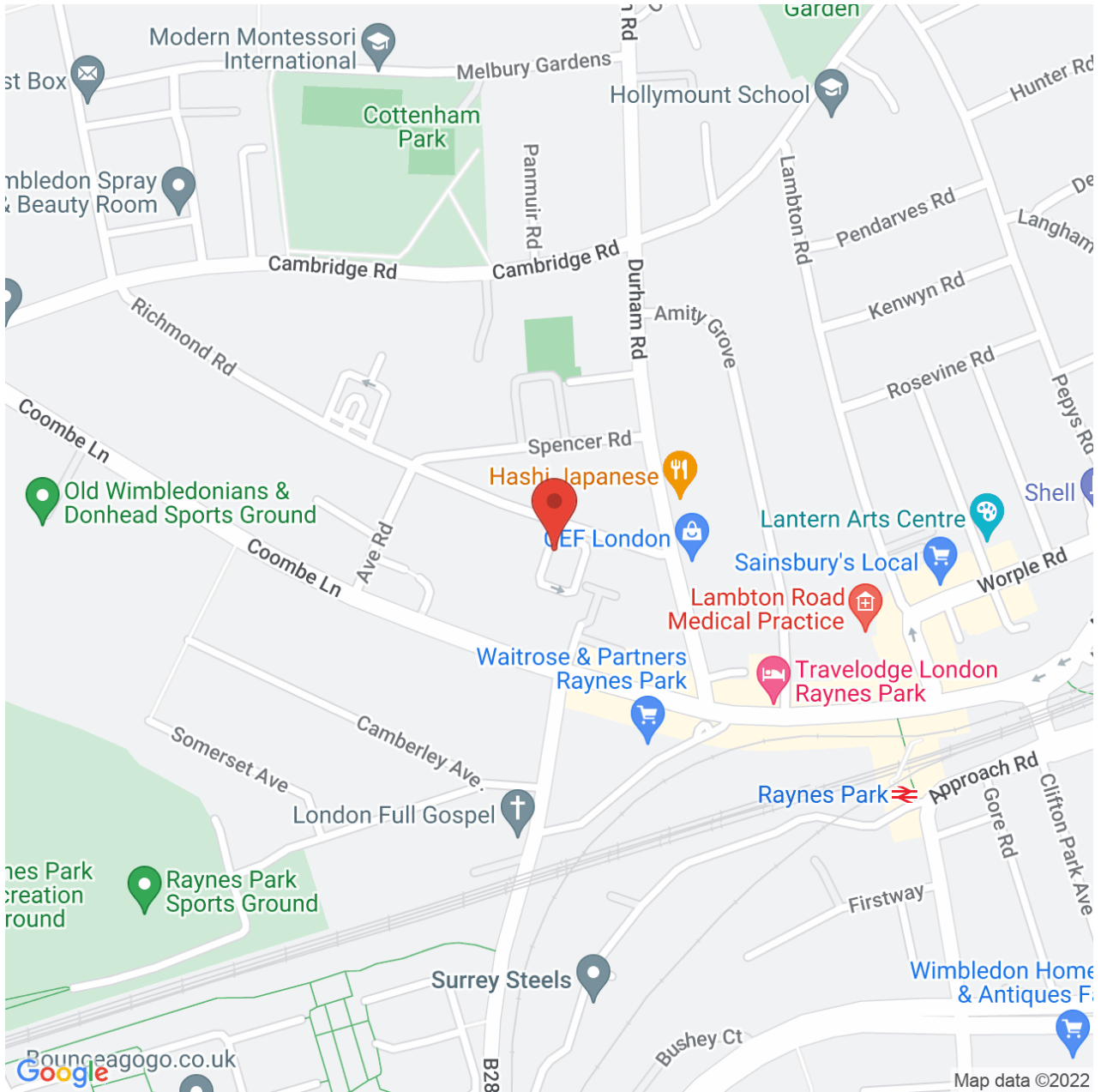
APPROXIMATE GROSS INTERNAL FLOOR AREA: 543 SQ FT - 50.45 SQ M



GROUND FLOOR

FOR ILLUSTRATION PURPOSES ONLY

THIS FLOOR PLAN SHOULD BE USED AS A GENERAL OUTLINE FOR GUIDANCE ONLY AND DOES NOT CONSTITUTE IN WHOLE OR IN PART AN OFFER OR CONTRACT.
ANY INTENDING PURCHASER OR LESSEE SHOULD SATISFY THEMSELVES BY INSPECTION, SEARCHES, ENQUIRIES AND FULL SURVEY AS TO THE CORRECTNESS OF EACH STATEMENT.
ANY AREAS, MEASUREMENTS OR DISTANCES QUOTED ARE APPROXIMATE AND SHOULD NOT BE USED TO VALUE A PROPERTY OR BE THE BASIS OF ANY SALE OR LET.



Map supplied by Google Maps. To open map in your browser please [click here](#).