



Property Type: Flat/Apartment

Bedrooms: 2

Summary: Luxurious 2-Bedroom Apartment with Balcony in Paultons Square off Kings Road

Description: Welcome to our exquisite 2-bedroom, 2-bathroom apartment nestled in a serene residential square just off the vibrant Kings Road. This spacious and recently refurbished property offers a high standard of living, making it an ideal choice for those seeking comfort, style, and convenience.

Date Available: 01 Sep 2025

Rent (PCM): £3,000

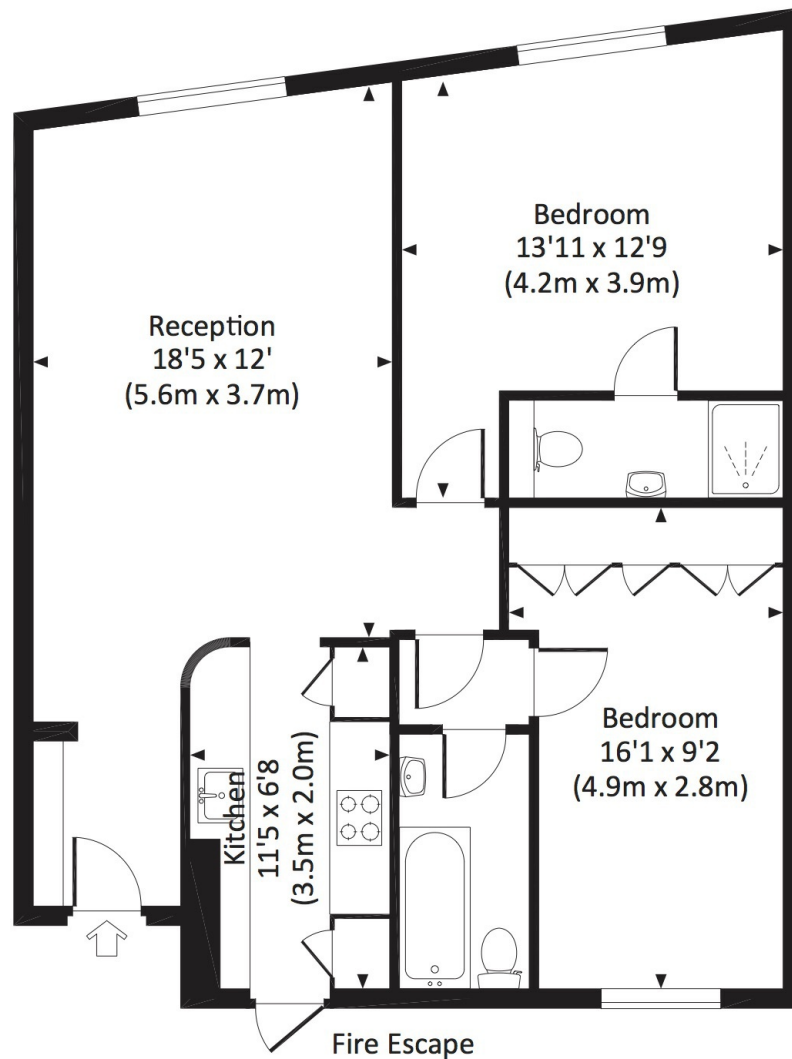


55a High St Wimbledon SW19 5BA tel: 020 8946 7661 info@moss londonlettings.co.uk

PAULTONS SQUARE, SW3

Approx. gross internal area

745 Sq Ft. / 69.2 Sq M.



FOURTH FLOOR

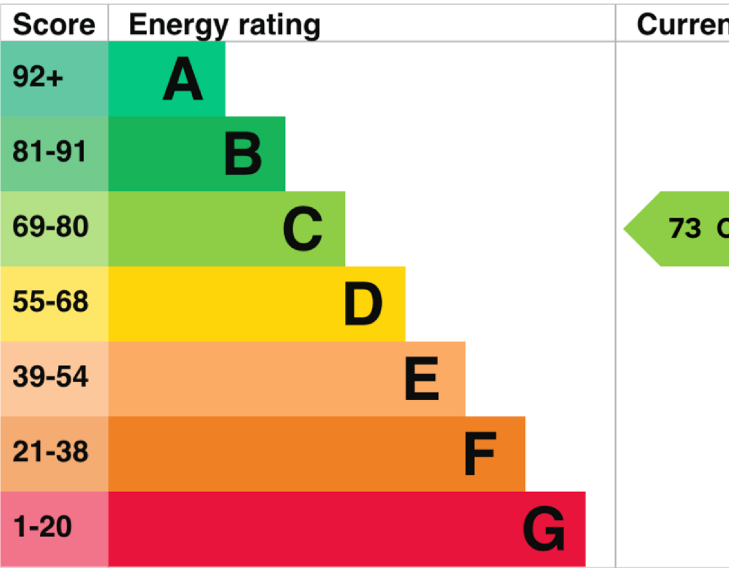


All measurements have been made in accordance with RICS Code of Measuring Practice which are approximate only and only for illustrative purposes. For the avoidance of doubt, Dowling Jones Design shall not be liable for any reliance on these measurements. © 2016 www.dowlingjones.com 020 7610 9933

Energy rating and score

This property’s energy rating is C. It has the potential to be C

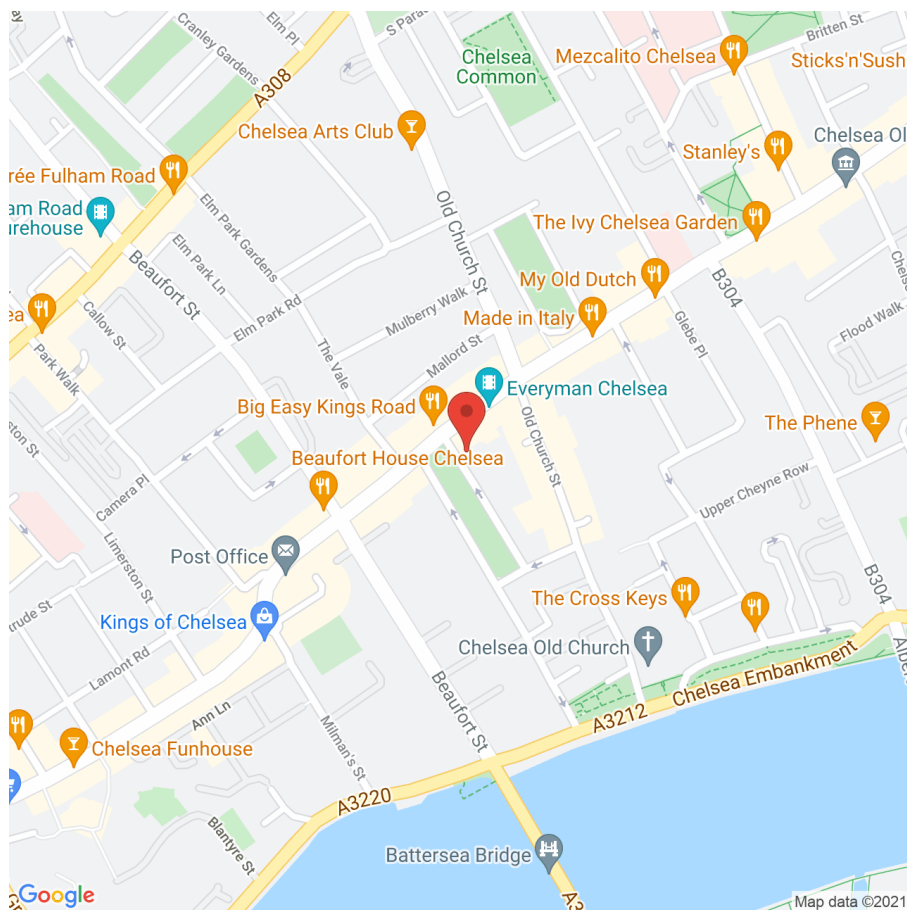
[See how to improve this property’s energy efficiency.](#)



The graph shows this property’s current and potential energy

Properties get a rating from A (best) to G (worst) and a score
the rating and score, the lower your energy bills are likely to

For properties in England and Wales:



Map supplied by Google Maps. To open map in your browser please [click here](#).