

Property Type: House

Bedrooms: 3

Summary: 3 double bedroom house in an ideal location close to local transport links and amenities. Available now and early viewing highly recommended. Ideal for a small family or 3 professional sharers.

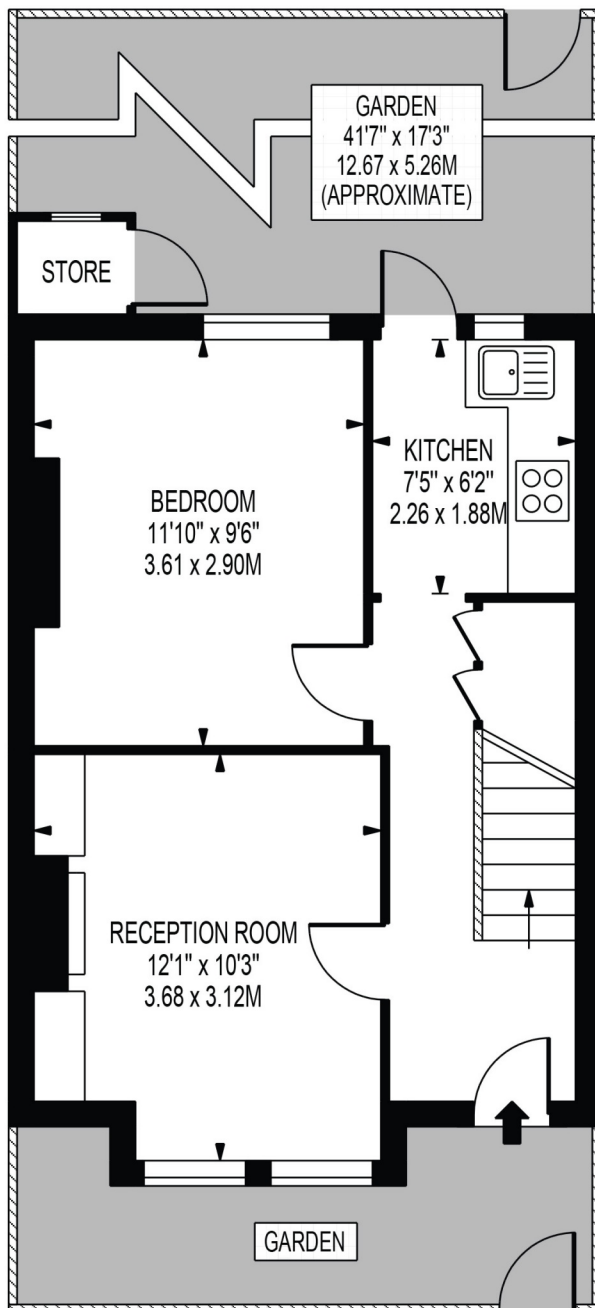
Description: This fantastic property is available now. The house is well presented and has 3 bright double bedrooms and is furnished. Nice sized reception room and kitchen with doors onto the garden. A Nice neutral bathroom on the 1st floor. The property also has a large low maintenance garden.

Date Available: 01 Sep 2025

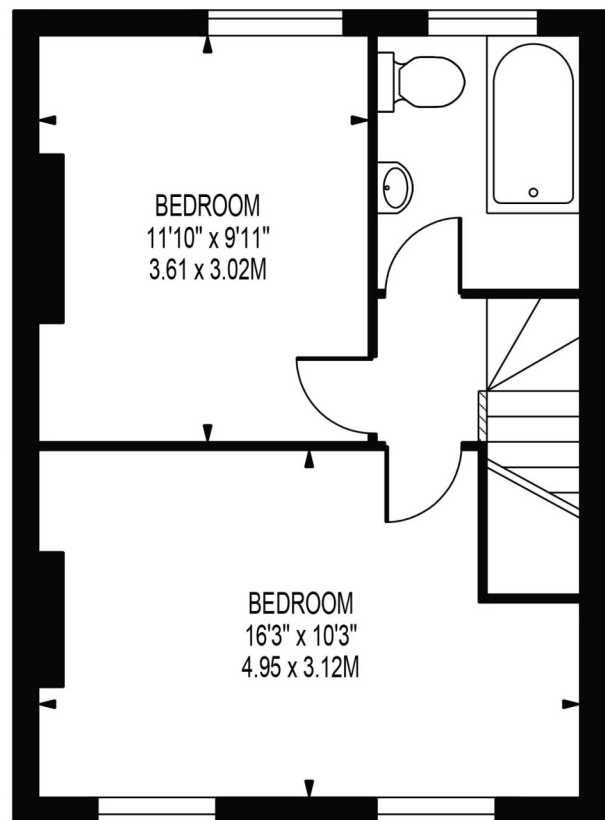
Rent (PCM): £2,250

PALESTINE GROVE

APPROXIMATE GROSS INTERNAL FLOOR AREA: 733 SQ FT - 68.10 SQ M
(EXCLUDING STORE)



GROUND FLOOR



FIRST FLOOR

FOR ILLUSTRATION PURPOSES ONLY

THIS FLOOR PLAN SHOULD BE USED AS A GENERAL OUTLINE FOR GUIDANCE ONLY AND DOES NOT CONSTITUTE IN WHOLE OR IN PART AN OFFER OR CONTRACT. ANY INTENDING PURCHASER OR LESSEE SHOULD SATISFY THEMSELVES BY INSPECTION, SEARCHES, ENQUIRIES AND FULL SURVEY AS TO THE CORRECTNESS OF EACH STATEMENT. ANY AREAS, MEASUREMENTS OR DISTANCES QUOTED ARE APPROXIMATE AND SHOULD NOT BE USED TO VALUE A PROPERTY OR BE THE BASIS OF ANY SALE OR LET.

Score	Energy rating	Current	Potential
92+	A		
81-91	B		86 B
69-80	C		
55-68	D	64 D	
39-54	E		
21-38	F		
1-20	G		



Map supplied by Google Maps. To open map in your browser please [click here](#).