



**Property Type:** House

**Bedrooms:** 4

**Summary:** Newly renovated and extremely spacious 4 bedroom 2 bathroom home in an ideal location with private garden.

**Description:** Providing lots of accommodation is this modern 4 bedroom 2 bathroom town house located in a quiet cul de sac near Tooting Train Station and within a few minutes' walk to Colliers Wood tube station.

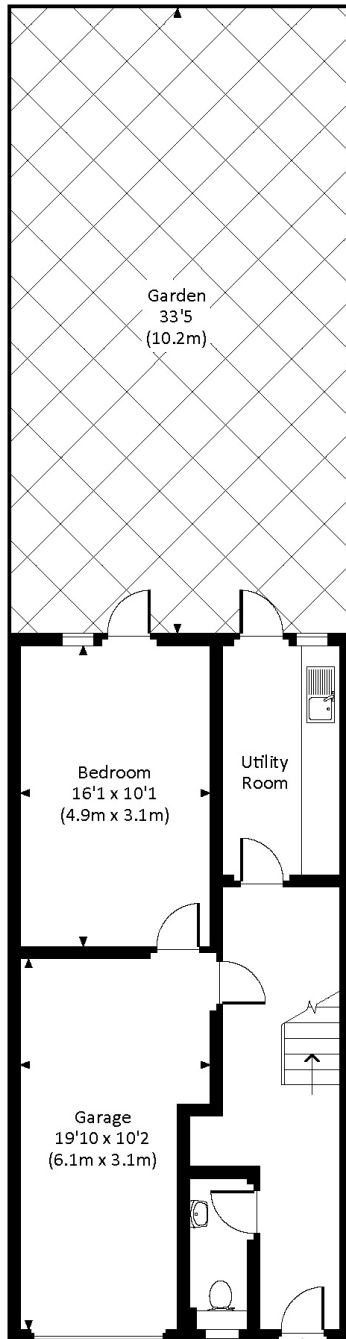
**Date Available:** 18 Aug 2026

**Rent (PCM):** £2,500

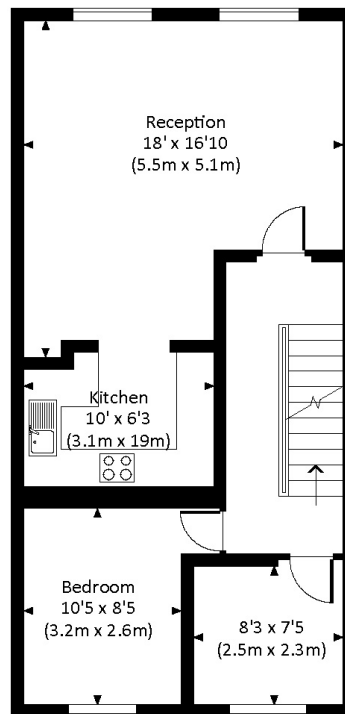


## WILKINS CLOSE, CR4

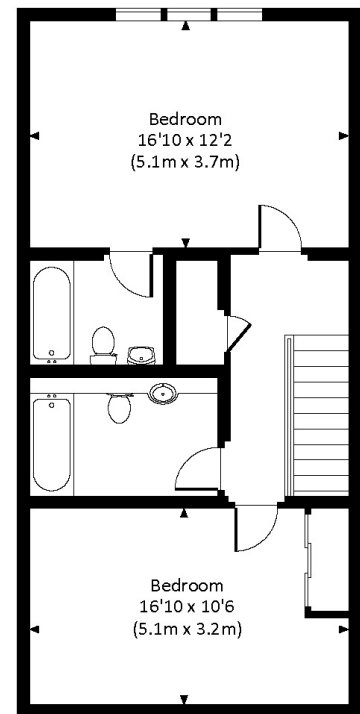
Approx. gross internal area  
1875 Sq Ft. / 174.2 Sq M.



GROUND FLOOR



FIRST FLOOR



SECOND FLOOR



19/05/2025, 16:26

Energy performance certificate (EPC) – Find an energy certificate – GOV.UK

## Energy performance certificate (EPC)

23 Wilkins Close MITCHAM CR4 3SA	Energy rating <b>D</b>	Valid until:	16 April 2033
		Certificate number:	0107-6724-9840-0395-0296

Property type: end-terrace house

Total floor area: 71 square metres

### Rules on letting this property

Properties can be let if they have an energy rating from A to E.

You can read [guidance for landlords on the regulations and exemptions \(https://www.gov.uk/guidance/domestic-private-rented-property-minimum-energy-efficiency-standard-landlord-guidance\)](https://www.gov.uk/guidance/domestic-private-rented-property-minimum-energy-efficiency-standard-landlord-guidance).

### Energy rating and score

This property's energy rating is D. It has the potential to be B.

[See how to improve this property's energy efficiency.](#)

The graph shows this property's current and potential energy rating.

**Properties get a rating from A (best) to G (worst) and a score.** The better the rating and score, the lower your energy bills are likely to be.

For properties in England and Wales:

the average energy rating is D  
the average energy score is 60

Score	Energy rating	Current	Potential
92+	<b>A</b>		
81-91	<b>B</b>		88 B
69-80	<b>C</b>		
55-68	<b>D</b>	68 D	
39-54	<b>E</b>		
21-38	<b>F</b>		
1-20	<b>G</b>		

19/05/2025, 16:26

Energy performance certificate (EPC) – Find an energy certificate – GOV.UK

## Breakdown of property's energy performance

### Features in this property

Features get a rating from very good to very poor, based on how energy efficient they are. Ratings are not based on how well features work or their condition.

Assumed ratings are based on the property's age and type. They are used for features the assessor could not inspect.

Feature	Description	Rating
Wall	Cavity wall, as built, insulated (assumed)	Good
Roof	Pitched, 100 mm loft insulation	Average
Window	Fully double glazed	Average
Main heating	Boiler and radiators, mains gas	Good
Main heating control	Programmer and room thermostat	Average
Hot water	From main system	Good
Lighting	Low energy lighting in 70% of fixed outlets	Very good
Floor	Solid, limited insulation (assumed)	N/A
Secondary heating	None	N/A

### Primary energy use

The primary energy use for this property per year is 207 kilowatt hours per square metre (kWh/m<sup>2</sup>).

---

## How this affects your energy bills

An average household would need to spend **£611 per year on heating, hot water and lighting** in this property. These costs usually make up the majority of your energy bills.

You could **save £162 per year** if you complete the suggested steps for improving this property's energy rating.

This is **based on average costs in 2023** when this EPC was created. People living at the property may use different amounts of energy for heating, hot water and lighting.

---

### Heating this property

Estimated energy needed in this property is:

- 4,971 kWh per year for heating
  - 2,582 kWh per year for hot water
-



19/05/2025, 16:26

Energy performance certificate (EPC) – Find an energy certificate – GOV.UK

## Impact on the environment

This property's environmental impact rating is D. It has the potential to be B.

Properties get a rating from A (best) to G (worst) on how much carbon dioxide (CO<sub>2</sub>) they produce each year.

## Carbon emissions

An average household produces 6 tonnes of CO<sub>2</sub>

This property produces 2.6 tonnes of CO<sub>2</sub>

This property's potential production 0.7 tonnes of CO<sub>2</sub>

You could improve this property's CO<sub>2</sub> emissions by making the suggested changes. This will help to protect the environment.

These ratings are based on assumptions about average occupancy and energy use. People living at the property may use different amounts of energy.

## Steps you could take to save energy

Step	Typical installation cost	Typical yearly saving
1. Increase loft insulation to 270 mm	£100 - £350	£20
2. Low energy lighting	£15	£18
3. Condensing boiler	£2,200 - £3,000	£88
4. Solar water heating	£4,000 - £6,000	£35
5. Solar photovoltaic panels	£3,500 - £5,500	£373

## Advice on making energy saving improvements

[Get detailed recommendations and cost estimates \(www.gov.uk/improve-energy-efficiency\)](https://www.gov.uk/improve-energy-efficiency)

## Help paying for energy saving improvements

You may be eligible for help with the cost of improvements:

- Insulation: [Great British Insulation Scheme \(www.gov.uk/apply-great-british-insulation-scheme\)](https://www.gov.uk/apply-great-british-insulation-scheme)
- Heat pumps and biomass boilers: [Boiler Upgrade Scheme \(www.gov.uk/apply-boiler-upgrade-scheme\)](https://www.gov.uk/apply-boiler-upgrade-scheme)
- Help from your energy supplier: [Energy Company Obligation \(www.gov.uk/energy-company-obligation\)](https://www.gov.uk/energy-company-obligation)

19/05/2025, 16:26

Energy performance certificate (EPC) – Find an energy certificate – GOV.UK

## Who to contact about this certificate

### Contacting the assessor

If you're unhappy about your property's energy assessment or certificate, you can complain to the assessor who created it.

Assessor's name	Syed Ali
Telephone	07912042270
Email	<a href="mailto:ali_syed12123@yahoo.co.uk">ali_syed12123@yahoo.co.uk</a>

### Contacting the accreditation scheme

If you're still unhappy after contacting the assessor, you should contact the assessor's accreditation scheme.

Accreditation scheme	Stroma Certification Ltd
Assessor's ID	STRO004772
Telephone	0330 124 9660
Email	<a href="mailto:certification@stroma.com">certification@stroma.com</a>

### About this assessment

Assessor's declaration	No related party
Date of assessment	15 April 2023
Date of certificate	17 April 2023
Type of assessment	<a href="#">RdSAP</a>



Map supplied by Google Maps. To open map in your browser please [click here](#).