



Property Type: Semi-Detached

Bedrooms: 4

Summary: Bright and spacious 4 bedroom house in prime location in Wimbledon. Off street parking/ fantastic rear and side garden. Fantastic location for local schools and transport links.

Description: 4 bedroom house on corner plot in sought after Dundonald Park .Suits sharers or family.This property benefits from a large kitchen diner/breakfasst room with french doors leading to gardens, a separate lounge, 4 bedrooms and 2 bathrooms.

Date Available: 07 Feb 2026

Rent (PCM): £2,950

55a High St Wimbledon SW19 5BA tel: 020 8946 7661 info@mosslondonlettings.co.uk

Toynbee Road

Approximate Gross Internal Area
117.52 sq m / 1264.97 sq ft

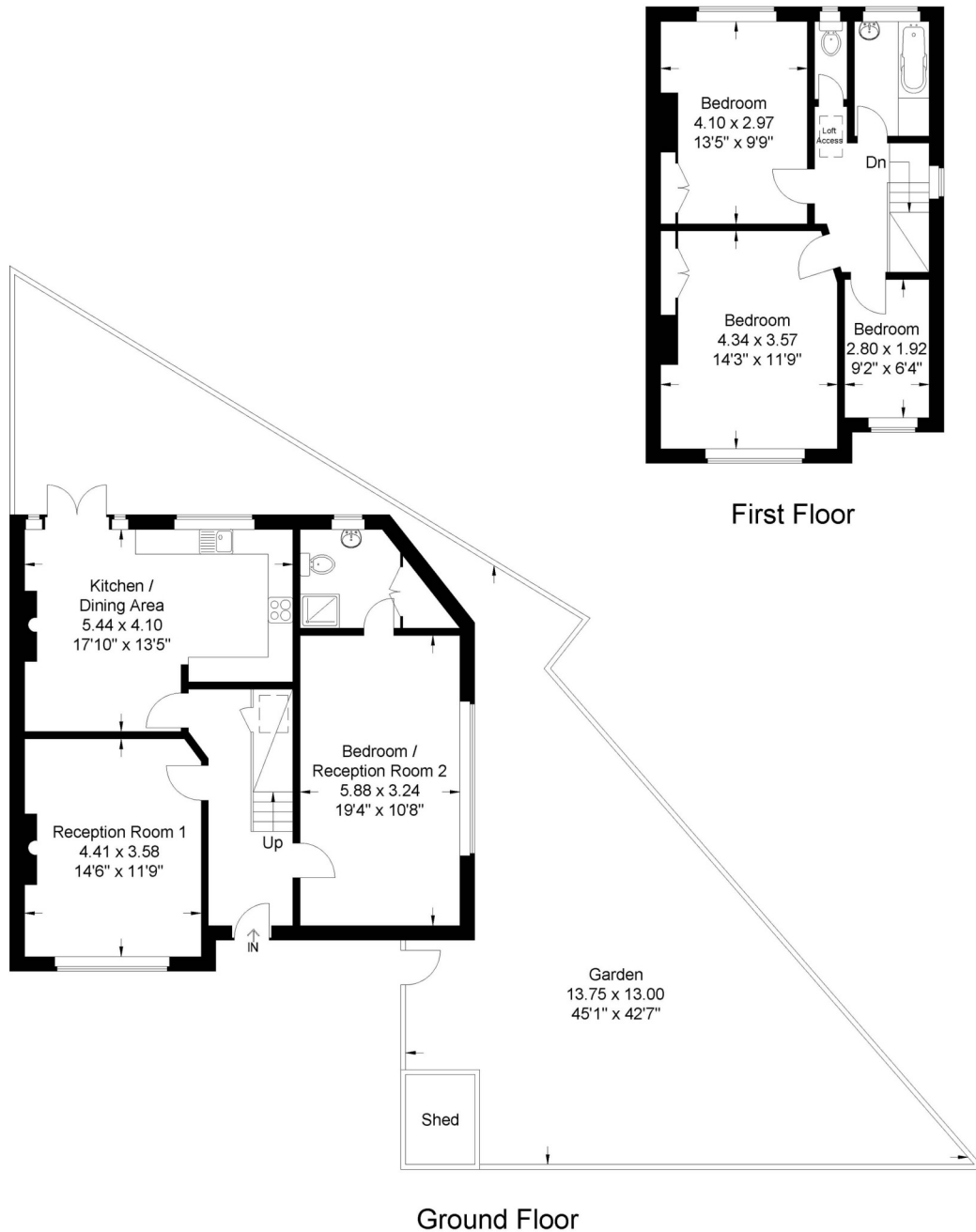


Illustration for identification purposes only, measurements are approximate, not to Scale

Score	Energy rating	Current	Potential
92+	A		
81-91	B		
69-80	C		78 C
55-68	D	61 D	
39-54	E		
21-38	F		
1-20	G		



Map supplied by Google Maps. To open map in your browser please [click here](#).