

Property Type: Flat/Apartment

Bedrooms: 3

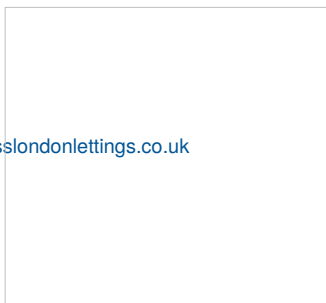
Summary: Very spacious 3 bedroom flat next to Richmond Park and Local Universities! Plenty of Storage. Furnished. Wandsworth Council Tax.

Description: Exceptionally spacious three double bedroom flat next to Richmond Park, RIHE and Queen Marys. Large kitchen with all mod cons and lots of storage. Laminate flooring throughout , carpet upstairs. Bath/wc/shower. Gas Ch. Large open feel living room. Kitchen/dining room.

Date Available: 31 Aug 2025

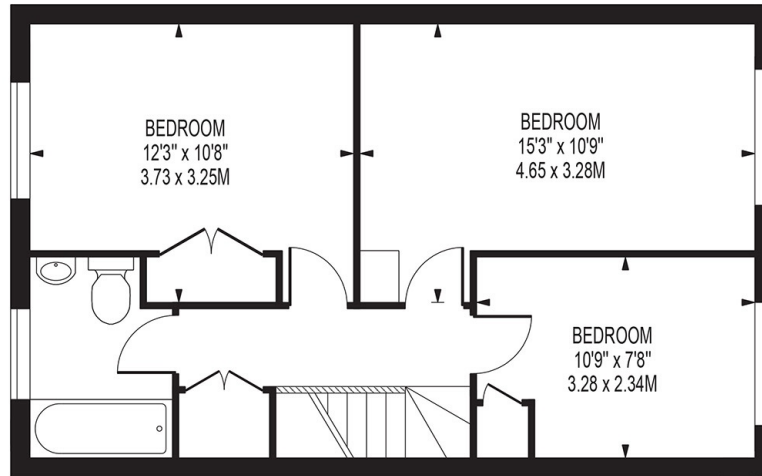
Rent (PCM): £2,200

55a High St Wimbledon SW19 5BA tel: 020 8946 7661 info@moss londonlettings.co.uk

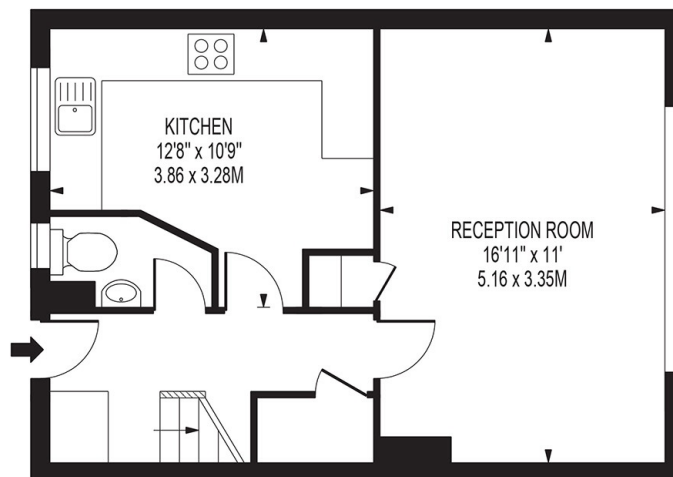


CLARENCE LANE

APPROXIMATE GROSS INTERNAL FLOOR AREA: 867 SQ FT - 80.55 SQ M



FIRST FLOOR



GROUND FLOOR

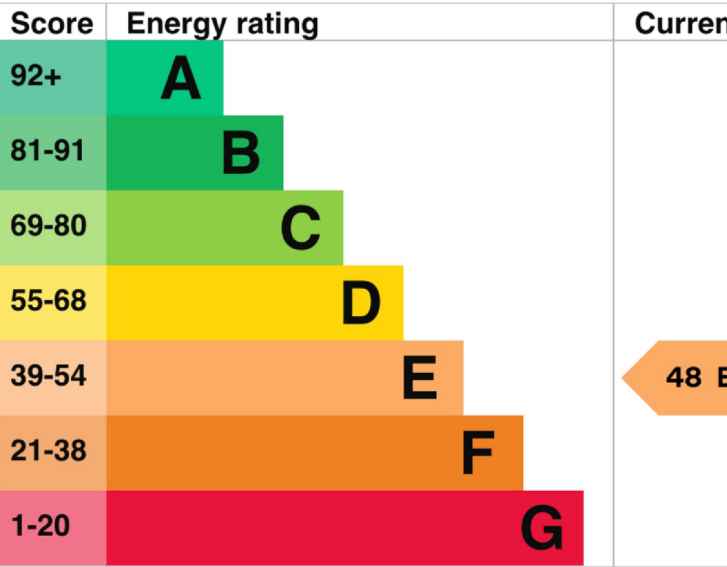
FOR ILLUSTRATION PURPOSES ONLY

THIS FLOOR PLAN SHOULD BE USED AS A GENERAL OUTLINE FOR GUIDANCE ONLY AND DOES NOT CONSTITUTE IN WHOLE OR IN PART AN OFFER OR CONTRACT.
ANY INTENDING PURCHASER OR LESSEE SHOULD SATISFY THEMSELVES BY INSPECTION, SEARCHES, ENQUIRIES AND FULL SURVEY AS TO THE CORRECTNESS OF EACH STATEMENT.
ANY AREAS, MEASUREMENTS OR DISTANCES QUOTED ARE APPROXIMATE AND SHOULD NOT BE USED TO VALUE A PROPERTY OR BE THE BASIS OF ANY SALE OR LET.

Energy rating and score

This property's energy rating is E. It has the potential to be C

[See how to improve this property's energy efficiency.](#)

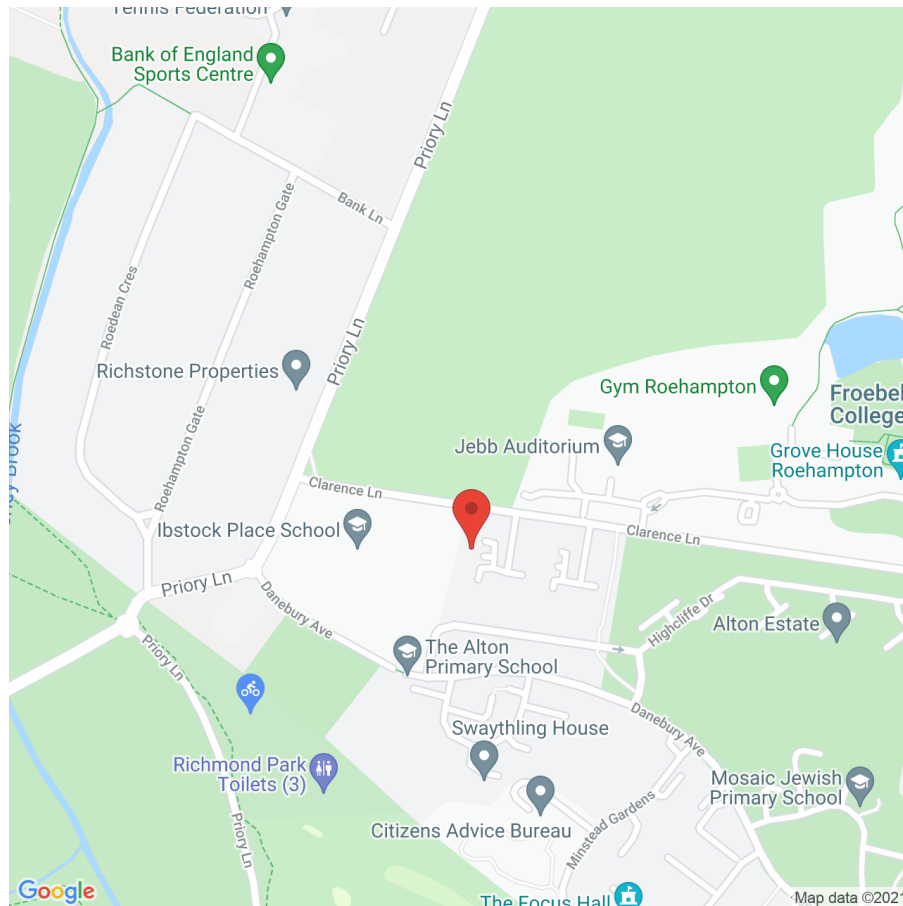


The graph shows this property's current and potential energy rating

Properties get a rating from A (best) to G (worst) and a score. The lower the rating and score, the lower your energy bills are likely to be.

For properties in England and Wales:

- the average energy rating is D
- the average energy score is 60



Map supplied by Google Maps. To open map in your browser please [click here](#).