



Property Type: Flat/Apartment

Bedrooms: 2

Summary: A bright and well-presented two-bedroom apartment set within southfields, offering generous living space, a modern fitted kitchen, garage and communal garden.

Description: Newly refurbished two-bedroom apartment has been finished in a fresh, neutral style throughout, creating a light and welcoming home ready for immediate occupation. The reception room benefits from large windows, newly fitted kitchen, modern tiled bathroom and separate WC.

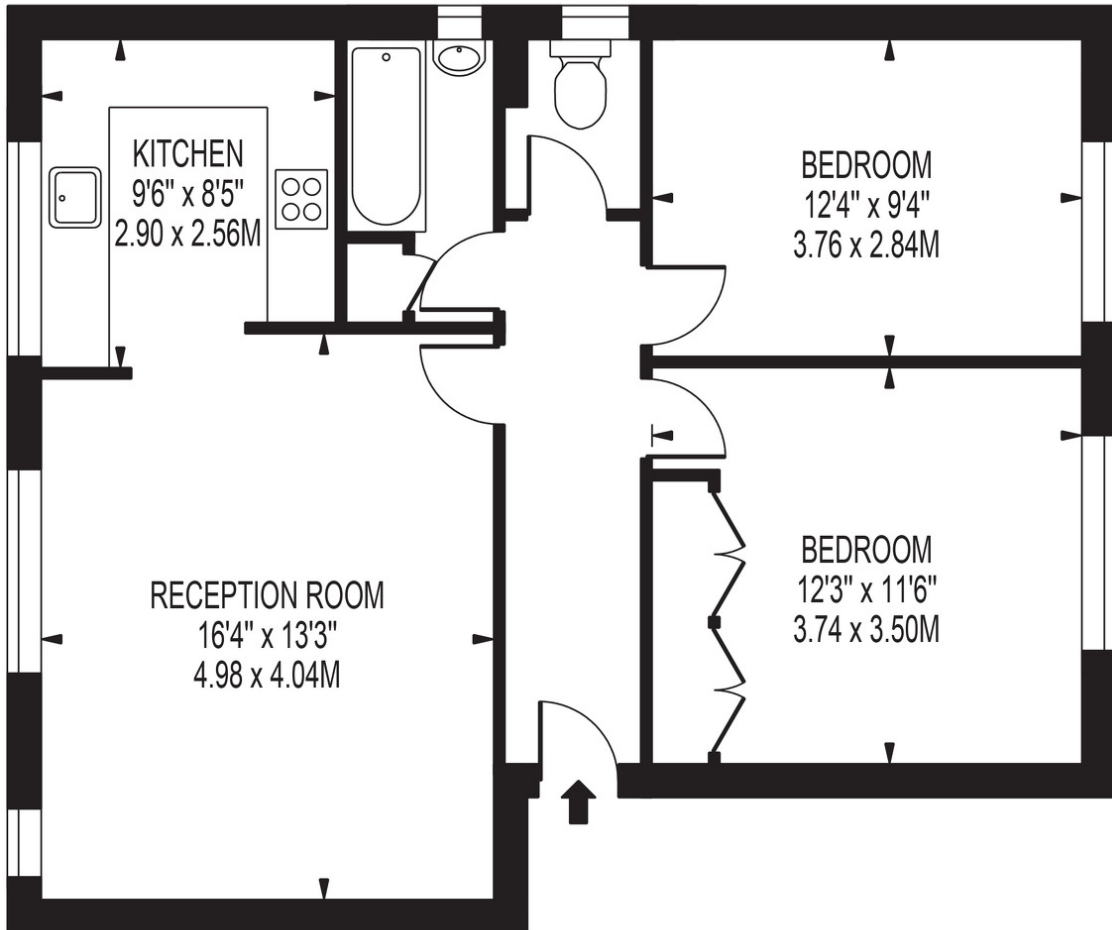
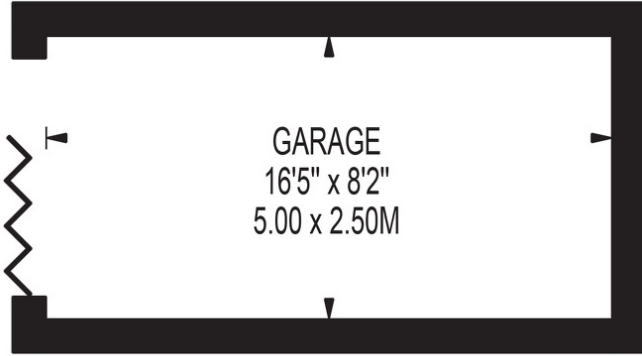
Date Available: 10 Jul 2026

Rent (PCM): £2,250

HIGHVIEW COURT

APPROXIMATE GROSS INTERNAL FLOOR AREA: **685 SQ FT - 63.68 SQ M**
(EXCLUDING GARAGE)

APPROXIMATE GROSS INTERNAL FLOOR AREA OF GARAGE: **135 SQ FT - 12.50 SQ M**



FIRST FLOOR

FOR ILLUSTRATION PURPOSES ONLY

THIS FLOOR PLAN SHOULD BE USED AS A GENERAL OUTLINE FOR GUIDANCE ONLY AND DOES NOT CONSTITUTE IN WHOLE OR IN PART AN OFFER OR CONTRACT. ANY INTENDING PURCHASER OR LESSEE SHOULD SATISFY THEMSELVES BY INSPECTION, SEARCHES, ENQUIRIES AND FULL SURVEY AS TO THE CORRECTNESS OF EACH STATEMENT. ANY AREAS, MEASUREMENTS OR DISTANCES QUOTED ARE APPROXIMATE AND SHOULD NOT BE USED TO VALUE A PROPERTY OR BE THE BASIS OF ANY SALE OR LET.



Map supplied by Google Maps. To open map in your browser please [click here](#).