

Property Type: Flat/Apartment

Bedrooms: 3

Summary: A charming and spacious three-bedroom top-floor maisonette in SW20, offering bright interiors, period charm, and modern amenities.

Description: This delightful three-bedroom top-floor maisonette is set within a charming period property in the sought-after SW20 area. The home offers generous living space, featuring a bright and spacious reception room enhanced by bay windows that flood the room with natural light.

Date Available: 02 Apr 2026

Rent (PCM): £2,200

55a High St Wimbledon SW19 5BA tel: 020 8946 7661 [info@moss londonlettings.co.uk](mailto:info@moss londonlettings.co.uk)

## Kingston Road

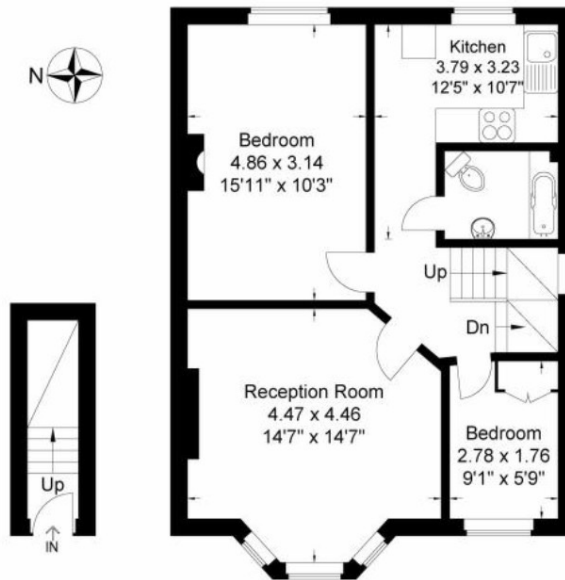
Approximate Gross Internal Area

86.30 sq m / 928.92 sq ft

(Excluding Shed)



Second Floor



Ground Floor

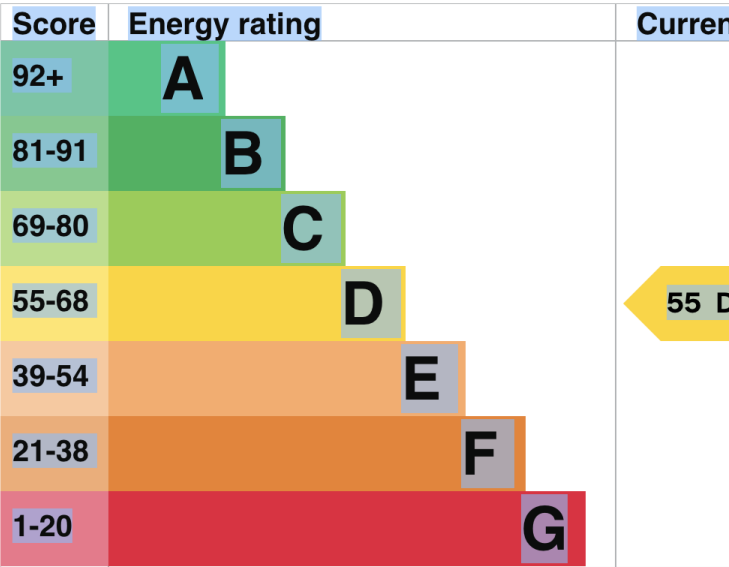
First Floor

Illustration for identification purposes only, measurements are approximate, not to Scale

# Energy rating and score

This property’s energy rating is D. It has the potential to be C

[See how to improve this property’s energy efficiency.](#)

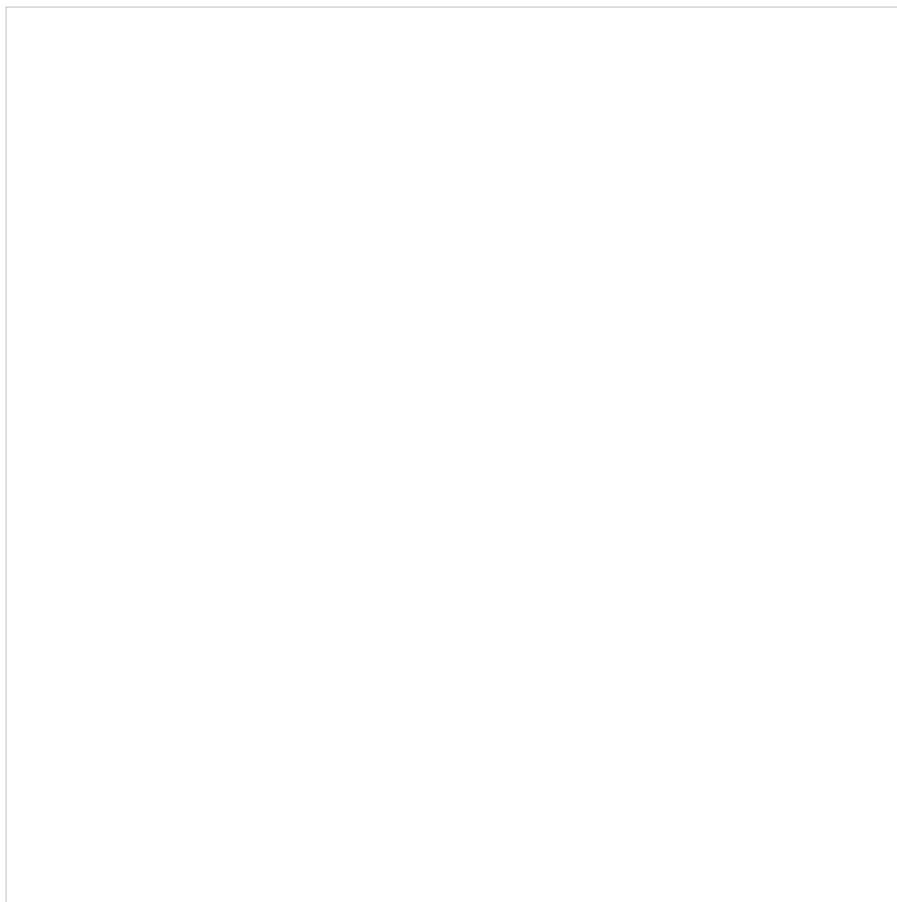


The graph shows this property’s current and potential energy rating

Properties get a rating from A (best) to G (worst) and a score. The lower the rating and score, the lower your energy bills are likely to be.

For properties in England and Wales:

- the average energy rating is D



Map supplied by Google Maps. To open map in your browser please [click here](#).